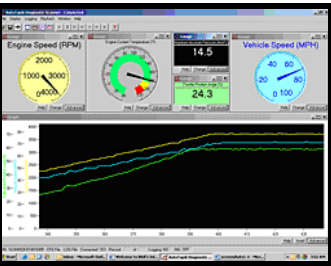


RUGGED DC PC

*"Rough-and-Ready"
for Extreme Environments*

Designed for automotive and marine applications.

- Integrate multiple applications with one PC or use multiple computers to create virtual multi-processor system
- 12-29VDC Powered, PC-based Heavy-Duty Automotive / Marine / Industrial Computer
- Exclusive Power Control System with Built-in UPS (*Patent Pending*)
- Compact, Sealed Case with Exclusive Passive Cooling Technology (*Patent Pending*)
- Ultra-low DC Input Power <40W (2~3A @ 12VDC) typical
- Intel Core 2 Duo processor standard
- Interchangeable with hardened laptops, embedded control computers and vehicular based computer systems
- Vehicle mounted or field deployable
- Open Architecture. Tested to run all PC Operating Systems: Windows XP, Vista, Linux, QNX, XPe, CE, Etc.



**AutoTap OBDII/CAN
Engine Management Software**

A20-HH: Harsh Environment, Power Fault Tolerant,
USB 2.0 Hub with 6 Harsh USB Ports powered by
A20-MC Power System



A20-MC (standard configuration)... MSRP \$4,895



A20-DH: 1 DIN, Slot Load, Power Fault Tolerant, CD/
DVD RW, USB 2.0 Hub powered by A20-MC Power



**Nobeltec GPS
Nobeltec Admiral Software
Suite Certified**

All trademarks are owned by their respective owners.



A20-MC

19629 S. McCord Rd.
Oregon City, OR 97045
www.AplusMobile.com
503.265.9325
Sales@AplusMobile.com
CAGE Code: 4P1Q1

Specifications

- **Capability:** Open Architecture so it will run all currently available PC operating systems, applications and peripherals. This enables the A20-MC to replace or upgrade existing field computers that present maintenance or reliability issues. Upgrades can be accomplished by IT personnel, without extended training or infrastructure upgrade.
- **Power Efficiency:** Draws less than 40W of power. Powered by vehicles's primary battery and alternator. No power infrastructure upgrades necessary. The A20-MC is powered by the raw 12-29VDC bus (0-30VDC operational).
- **Reliability:** Passively cooled, sealed (*patent pending*) to prevent contaminant ingestion of dust or water, the leading cause of field deployed computer failures. Power Fault Tolerant™ (*patent pending*) with internal UPS (uninterruptible power supply) so that the A20-MC is immune to power transients.
- **Processing Power:** High computing processor power of the Intel Core 2 Duo, the most advanced processor on the market for mobile applications. The A20-MC is based on Intel chipsets and related components.
- **Flexible Form Factor:** Remotely mounted from monitors and other peripherals for maximum flexibility.
- **Dimensions:** 2.85"h (7.2cm) x 10.5"w (26.7cm) x 9"d (22.9cm)
- **Weight (Standard Configuration):** 10.9 lbs. (4.954kg)
- **User Manual:** Available at www.AplusMobile.com

A20-MC Standard Configuration..... MSRP \$4,895	
Processor	Intel Core 2 Duo, T5600 @ 667MHz FSB
Chipset	Intel GM(E)965 north bridge, ICH8M south bridge
System Memory	2GB DDR2 677 SDRAM memory size (2 x 1GB)
XVGA video	Built-in Intel Graphics with GMA X3100 Technology
Onboard CF Slot	One 2GB CF type-II
Onboard Video	XVGA, TV OUT, Composite, Component (YPbPr), 1080p HDTV 1600 x 1200 max
Onboard Audio	Intel ICH8-M with Realtek ALC888 HD Audio, stereo connection standard with adapter cable
Onboard USB	Two harsh USB 2.0 (Can use standard USB cables)
Onboard LAN	Intel 82573L 10/100/1000GB
Voltage Input	Universal 12-29VDC nominal line
Typical Power Consumption	<40W (2 ~ 3A @ 12VDC)
APM I/O Conn.	DB-15 APM Expansion Connector
Onboard CF Slot	One 2GB CF type-II
Onboard Serial	2 x RS-232 (standard) or 1 x RS-232 and 1 x RS232/422/485 *
Internal Mini-PCI	Two Optional Mini-PCI add-in cards *
Onboard SATA HD	One 250GB SATA, Mechanical 2.5" hard drive

A20 Accessories and Options		MSRP
A20-DH	1DIN, Harsh, Remote Dash Interface with DVD/RW Slot Load Drive and USB Ports	\$899
A20-HH	Harsh USB 2.0 Hub, Aluminum Chassis	\$575
OBDII/CAN Module	Scan interface and software	\$199
OBDII/CAN Module Enhanced	Enhanced parameter per vehicle type (GM/Ford/Chrysler)	\$349
4GB DDR2 RAM	Dual channel (2 x 2GB) MB. Only 3GB accessible.	\$380
A20-CS	Basic Accessories Cable Set	\$299
Firewire	IEEE 1394A pigtail	\$65
T7500 Intel CPU	T7500 Core 2 Duo Upgrade	\$145
Preloaded Windows XP	Windows XP Home Operating System (Add \$50 for Pro Upgrade)	\$249
4GB CF Card	4GB CF Upgrade	\$75
8GB CF Card	8GB CF Upgrade	\$120
16GB CF Card	16GB CF Upgrade	\$185
RS485 / RS422	1 x RS485 or 1 x RS422 *	\$25
APM-MP-878D	Mini-PCI video capture card, Conexant Bt878A decoder	\$214
APM-MP-323	Mini-PCI IEEE 1394A Module (3 ports) with cables	\$257
APM-MP-954	Mini PCI support 4 x Serial Ports Module (3 x RS232 and 1 x RS232/422/485) *	\$156
APM-MP-541D2	Mini-PCI Dual Gigabit Ethernet Module with cables	\$309
APM-MP-2501	Mini-PCI 802.11b/g Wireless card	\$168
Dual 250GB HD	2 x 2.5" Mech. Harddrive (500GB total)	\$180
32GB SSD	32GB Solid State Harddrive	\$240
Dual 32GB SSD	2 x 32GB SSD (64GB total)	\$564
64GB SSD	64GB Solid State Harddrive	\$549
Dual 64GB SSD	2 x 64GB SSD (128GB total)	\$1180

* All configurations must be specified at time of order. Motherboard not user accessible. Other configurations available, please consult factory.

Copyright 2003-2007 Aplus Mobile, Inc. All rights reserved.
All Trade Marks are owned by their respective owners, whether marked TM or otherwise.

84-0A20-RT_RN_0903.fm



A20-MC

19629 S. McCord Rd.
Oregon City, OR 97045
www.AplusMobile.com
503.265.9325
Sales@AplusMobile.com
CAGE Code: 4P1Q1